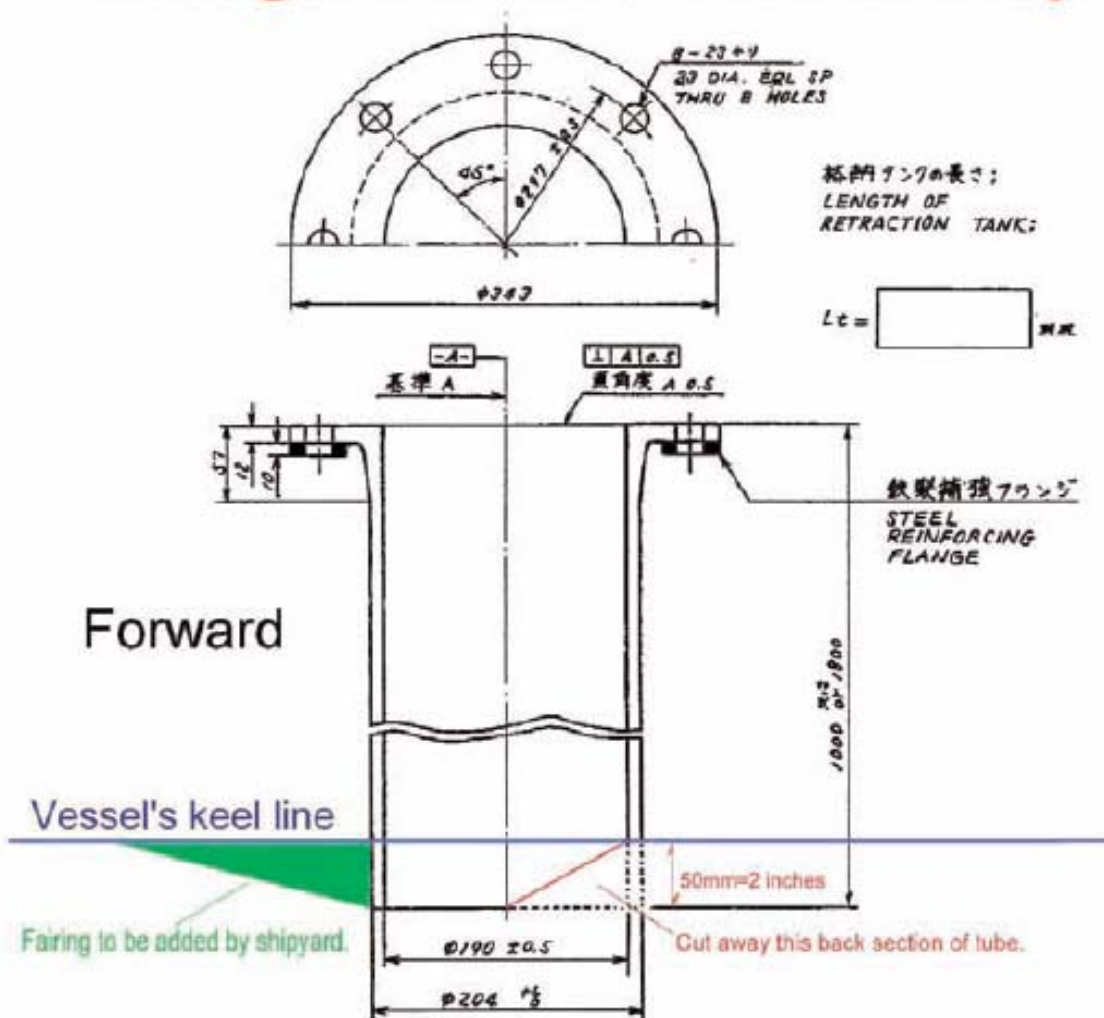


CAUTION !

Although the Installation manual references 475mm (18.7") as a minimum hull tube length, this is only for vessels with maximum speeds of less than 10 kts. For faster vessels, please observe the minimum hull tube length of 26" as shown below.

Drawing for keel installation only.



Standard tank length is 1 meter.
Minimum tank length is 26 inches or 660mm.

